



# STAR TRONIC BIDI



Mechanical limit  
switch



Two-way  
protocol



Radio control

STAR TRONIC BIDI Ø35 mm | STAR TRONIC BIDI Ø35 mm

# STAR TRONIC BIDI

*STAR TRONIC BIDI motors represent a natural evolution of the TRONIC line, combining the simplicity of a motor with a mechanical limit switch with the convenience of a two-way radio receiver. This fusion of technologies offers a motor that is both simple and sophisticated: while maintaining the reliability and robustness of mechanical motors, it also provides the convenience of controlling the blinds wirelessly.*

## REFERENCES



STAR TRONIC BIDI Ø35mm



STAR TRONIC BIDI Ø45mm

### Ø35 mm

6/28	90.335.006 BI
10/17	90.335.010 BI

### Ø45 mm

20/15	90.345.020 BI
30/15	90.345.030 BI
50/12	90.345.050 BI

Mechanical limit switch with progressive regulation by rod.

Head with 12mm central hole for mounting on monoblock drawer.

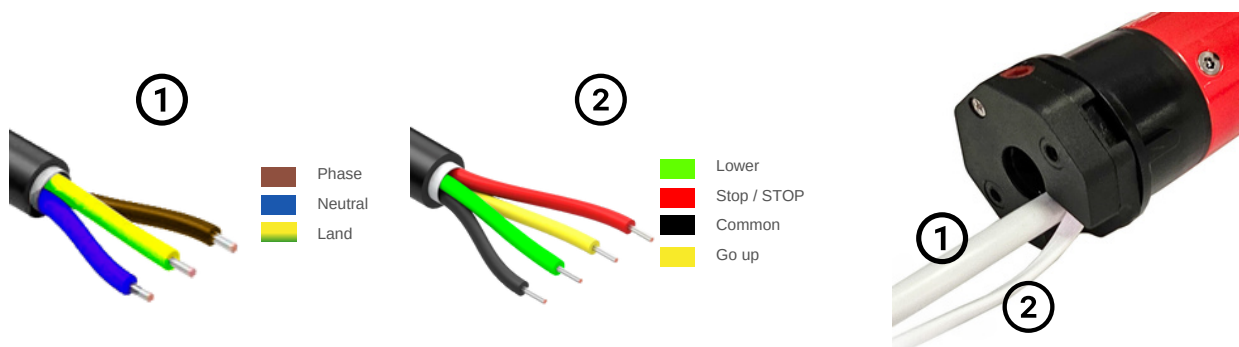
for Ø50, Ø56, Ø60, Ø70 and Ø78mm shaft.

Two-way radio receiver.

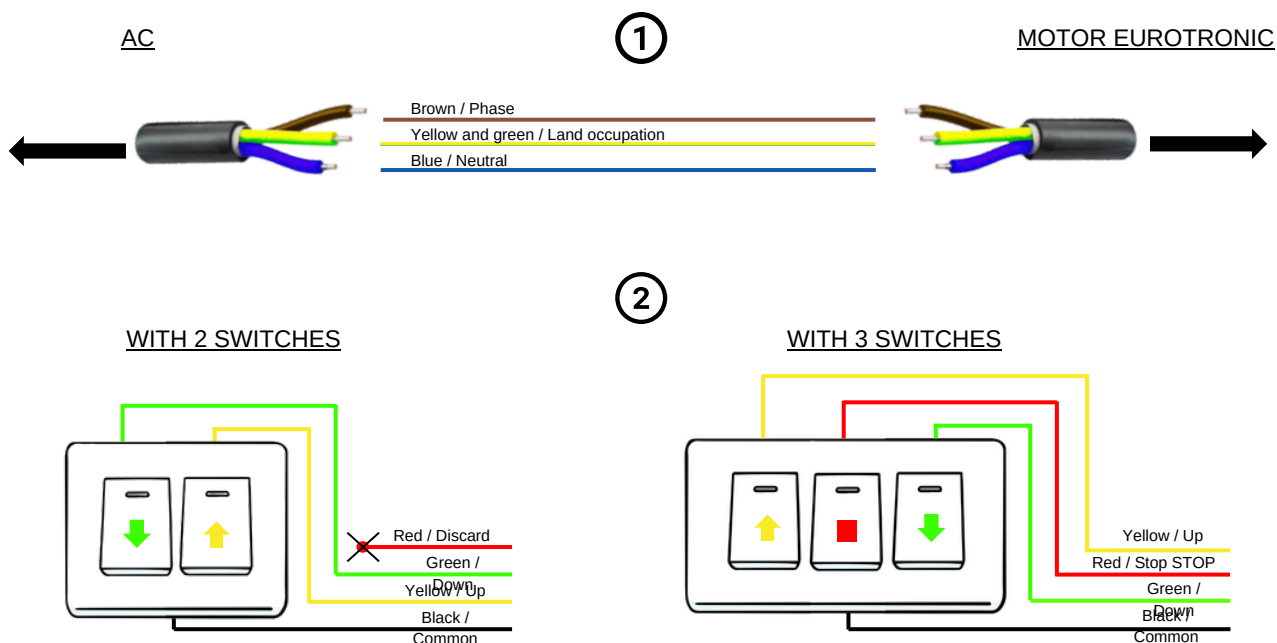
## TECHNICAL CHARACTERISTICS

Model	Par-nominal	Speed	Feeding	Nominal power	Amperage	Working time	Max rotations	Degree of protection	Length measurement	Max Weight
6/28	6 Nm	28 rpm	230v 50hrz	121 W	0.53 A	4 min	30	IP 44	445 mm	9,5 Kg
10/17	10 Nm	17 rpm	230v 50hrz	121 W	0.53 A	4 min	30	IP 44	445 mm	12 Kg
20/15	20 Nm	15 rpm	230v 50 hrz	145 W	0.64 A	4 min	23	IP 44	622mm	32 Kg
30/15	30 Nm	15 rpm	230v 50hrz	145 W	0.64 A	4 min	23	IP 44	667mm	48 Kg
50/12	50 Nm	12 rpm	230v 50hrz	205 W	0.89 A	4 min	23	IP 44	667mm	80 Kg

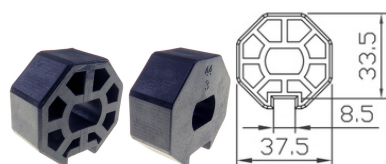
## MOTOR CONNECTORS



## ELECTRICAL DIAGRAM



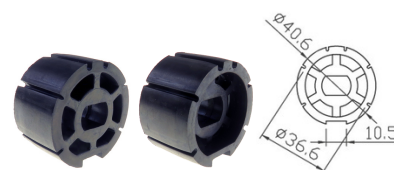
## ACCESSORIES FOR DIAMETER 35MM:



**40 octagonal pulley** | 61.005.001



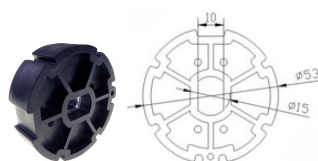
**Corona 40 octagonal** | 61.005.101



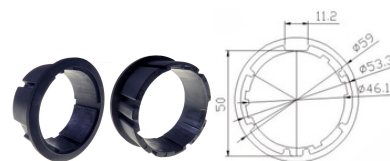
**Pulley 43** | 61.005.002



**Corona 43** | 61.005.102



**Pulley 56** | 61.005.003



**Corona 56** | 61.005.103



**Pulley 50 round** | 61.005.009

## Mounting brackets:

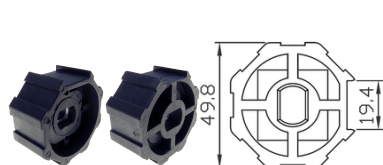


**DRAWER SUPPORT FOR 35MM  
MOTORS**

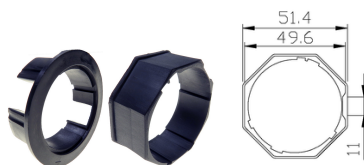
60.004.106



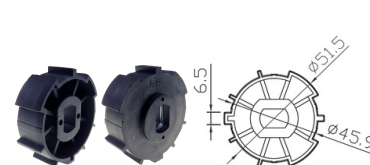
## ACCESSORIES FOR DIAMETER 45MM:



**50 octagonal pulley** | 61.005.010



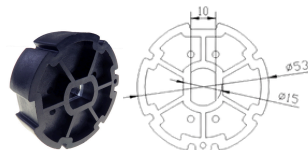
**Corona 50 octagonal** | 61.005.110



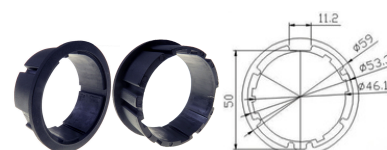
**DEPRAT 54 octagonal pulley** | 61.005.099



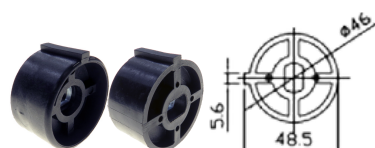
**Corona 54 octagonal DEPRAT** | 61.005.098



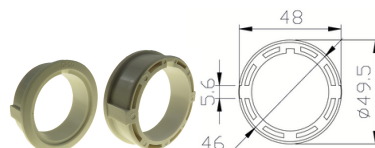
**Pulley 56** | 61.005.003



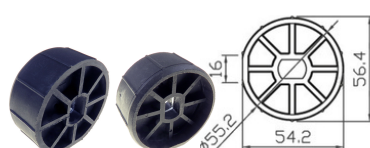
**Corona 56** | 61.005.103



**reinforced pulley 58** | 61.005.008



**Reinforced Crown 58** | 61.005.108



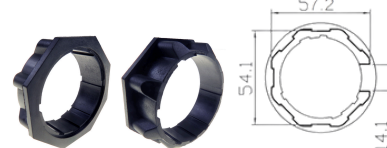
**Pulley 60 round** | 61.005.012



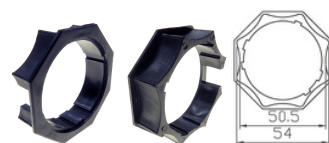
**reinforced octagonal pulley 60** | 40.005.011



**Corona 60 octagonal** | 61.005.111



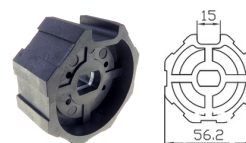
**Reinforced octagonal crown 60** | 40.005.111



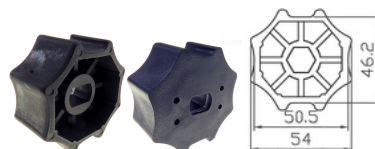
**Crown 60 curly** | 61.005.104



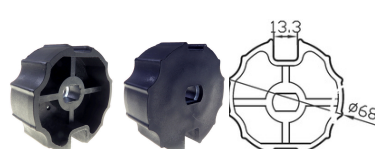
**Crown 60 round** | 61.005.112



**60 octagonal pulley** | 61.005.011



**Pulley 60 curled** | 61.005.004

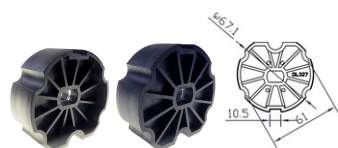


**Pulley 70 offset warhead** | 61.005.005



**Crown 70 off-centered ogive** | 61.005.105

## ACCESSORIES FOR DIAMETER 45MM:



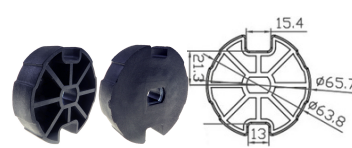
**Pulley 70 BAT warhead**

61.005.029



**Corona 70 BAT warhead**

61.005.129



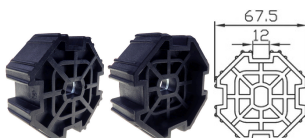
**Pulley 70 centered warhead**

61.005.014



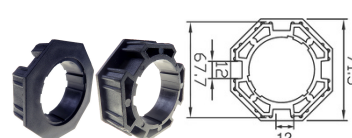
**Crown 70 centered ogive**

61.005.114



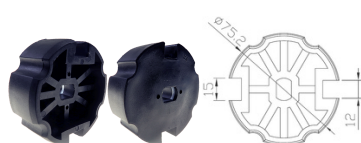
**70 octagonal pulley**

61.005.006



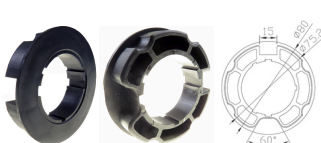
**Corona 70 octagonal**

61.005.106



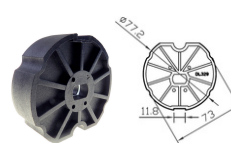
**Pulley 78 Warhead**

61.005.007



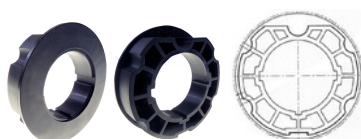
**Crown 78 Warhead**

61.005.107



**Pulley 80 BAT warhead**

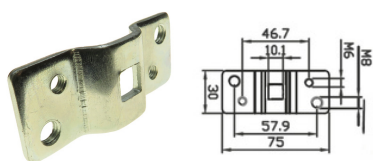
61.005.030



**Corona 80 BAT warhead**

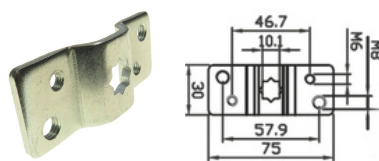
61.005.130

## MOUNTING BRACKETS:



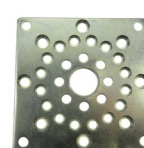
**CONSTRUCTION SUPPORT 45MM 2 AG.**

60.004.006



**45MM STAR CONSTRUCTION SUPPORT**

60.004.005



**DRAWER SUPPORT FOR 55/59MM**

60.004.059



**METAL SUPPORT 45 BD + BDP + WI**

60.004.109



**SKY BIDI TYPE METAL SHEET DRAWER SUPPORT**

60.004.110

## COMPATIBLE CON:



**KUMO WAVE**  
BD.100.001



**KIK1**  
BD.003.101



**KIK15**  
BD.003.115



**KIKWALLL**  
90.003.101



**KIKWALLL15**  
90.003.115



**NOX SOLAR  
WEATHER VANE**  
BD.002.124



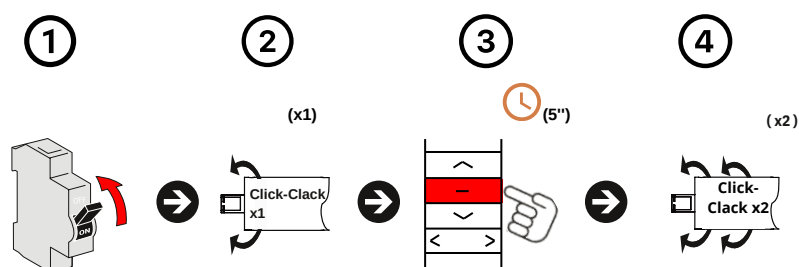
**KIK SUN**  
BD.003.115SUN



**KIK MOVE**  
BD.001.125

# INSTRUCTIONS:

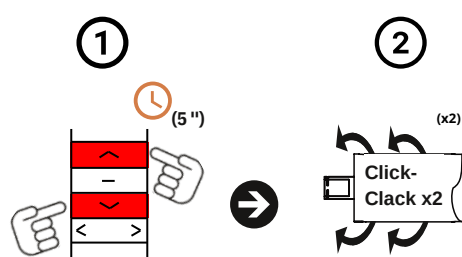
## 1. LINK FIRST TRANSMITTER



### Procedure:

1. To give current.
2. The motor will make a "CLICK-CLACK" sound (x1).
3. Press (STOP) on the remote control to record for five seconds (5").
4. The motor will make a "CLICK-CLACK" sound (x1).

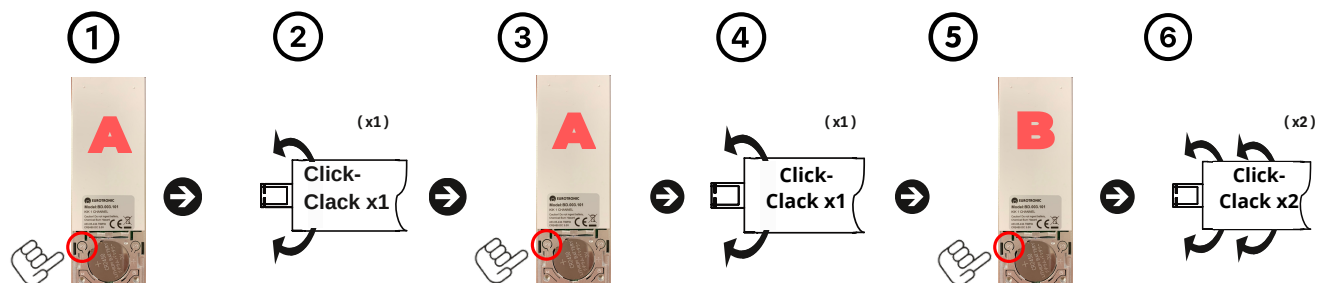
## 2. CHANGE OF ADDRESS



### Procedure:

1. Press the (UP) + (DOWN) button on the remote control at the same time for five (5") seconds.
2. The motor will make two "CLICK-CLACK" sounds (x2).

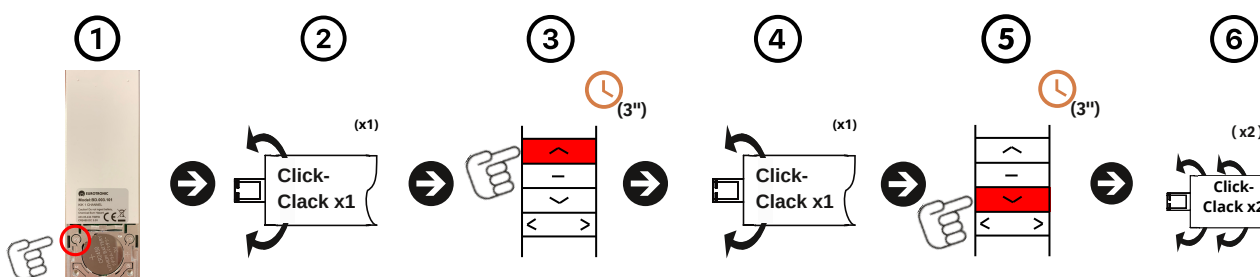
## 4. LINK/REMOVE AN ADDITIONAL TRANSMITTER



### Procedure:

1. Press the button (P2) located behind the already linked transmitter (A).
2. The motor will make a CLICK-CLACK (x1) and a beep (x1).
3. We will press the button (P2) of the same transmitter (A) again.
4. The motor will make a "CLICK-CLACK" sound (x1) and a beep sound (x1).
5. Then press the (P2) button on the new transmitter (B) to confirm.
6. The motor will make two "CLICK-CLACK" sounds (x2) and three beeps (x3).

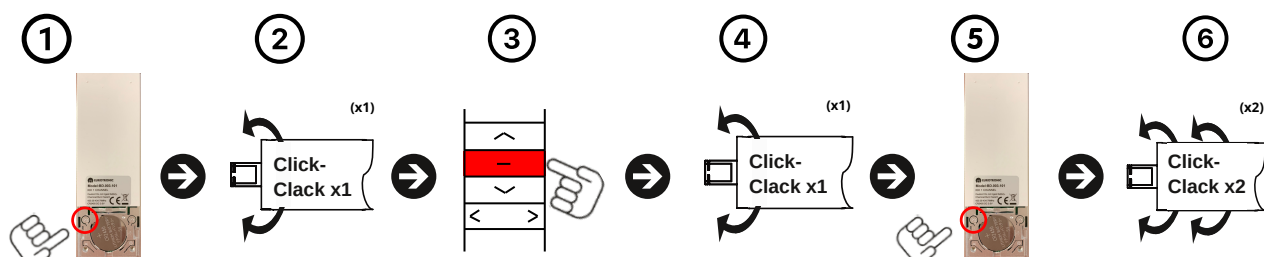
## 6. ACTIVATE/DEACTIVATE PULSE MOVEMENT



### Procedure:

1. We will press the button (P2) located behind the transmitter.
2. The motor will make a "CLICK-CLACK" sound (x1) and a beep sound (x1).
3. Press the (UP) button for three seconds (3").
4. The motor will make a "CLICK-CLACK" sound (x1) and a beep sound (x1).
5. Press the (DOWN) button for three seconds (3").
6. The motor will make two "CLICK-CLACK" sounds (x2) and three beeps (x3).

## 6. DELETE ALL TRANSMITTERS



### Procedure:

1. Press the button (P2), of an already recorded transmitter, located on the back.
2. The motor will make a "CLICK-CLACK" sound (x1) and a beep sound (x1).
3. Next we will press the central button (STOP).
4. The motor will make a "CLICK-CLACK" sound (x1) and a beep sound (x1).
5. We will press the (P2) button again to confirm.
6. The motor will make two "CLICK-CLACK" sounds (x2) and three beeps (x3).



[www.eurotronic-europe.com](http://www.eurotronic-europe.com)

C/Pica d'Estats, 108-118 Poligono Industrial Sant Isidre  
08272 Sant Fruitós de Bages (Barcelona) SPAIN

[pedidos@eurotronic-europe.com](mailto:pedidos@eurotronic-europe.com) Tel: +34 932 420 108